

ARTICLE INFO

Open Access



Date Received:
29/06/2023;
Date Revised:
30/08/2023;
Date Published Online:
31/12/2023;
Date Updated:
09/09/2025

Tracing the environmental effects of microfabric in the leaves of the *Cupressus dupreziana* plant and the surrounding soil in the context of the COVID-19 pandemic

Authors' Affiliation:

1. Department of Biology Science, Mustansiriyah University - Iraq
2. Biology Department, Faculty of Science, University of Tabuk, Umluj - Saudi Arabia
3. National University of Science and Technology, College of Health and Medical Technology - Iraq

Estabraq Mohammed Ati¹, Awatif M. Abdulmajeed², Basmah M. Alharbi², Reyam Najji Ajmi^{1*}, Abdalkader Saeed Latif³

Abstract

Background: The high death rate associated with COVID-19 may contribute to increased mineral pollution in cemetery soils, underscoring the necessity for future cemetery projects aimed at mitigating these environmental effects. This highlights the importance of studying metal concentrations in cemetery soils. The research focused on analyzing the mineral content of soil in the Najaf Governorate cemeteries in Iraq, particularly during a period marked by elevated mortality rates, to inform future projects that address environmental concerns.

Methods: Energy dispersive X-ray spectroscopy (EDX) and scanning electron microscopy (SEM) were employed to examine the soil characteristics in three cemeteries. Soil samples were collected three times from a depth of 10 to 30 cm around *Cupressus dupreziana* plants, using triplicate analyses and mean deviation. An autoregressive integrated moving averages model was then applied, incorporating 50% traceability to bioavailability in order to mitigate contamination risks.

Results: The analysis indicated elevated levels of iron and lead (Pb) in the cemetery soil. Given the increase in fatalities and the accompanying funerals, it is essential to consider that COVID-19's estimated daily death toll ranges between 20 and 50, with the potential for significant metal pollution. To diminish environmental impact, the facility managed gas and effluent processing at 80% capacity, concentrating on mineral contamination in the soil through spatial analysis.

Conclusion: EDX and SEM were confirmed as reliable methods, while the morphometric approach provided a comprehensive view of the soil and its associated plant life through elemental composition analysis. Utilizing these techniques enabled quantitative assessments and comparisons with control samples, facilitating a thorough characterization of *C. dupreziana*. Additionally, these analyses illuminated the various clusters of organisms present within the soil of the study area.

***Corresponding Authors:**

Reyam Najji Ajmi
Email:
reyam80a@uomustansiriyah.edu.iq

How to Cite:

Ati EM, Abdulmajeed AM, Alharbi BM, Ajmi RN, Latif AS(2023). Tracing environmental effects of microfabric in leaves of *Cupressus dupreziana* plant and soil surrounding it given the rise in COVID19. Adv. Life Sci. 10(4): 663-669.

Keywords:

Indication metals;
Environmental analysis;
Cupressus dupreziana; Soil pollution

Editorial Note:

You are viewing the latest version of this article having minor corrections related to the use of English language.

Introduction

The Wadi al-Salam cemetery is located in Najaf, one of Iraq's governorates. It is delimited to the south by the mausoleum of Imam Ali bin Abi Talib, on the east by the Najaf Road leading to Karbala, and on the west by the old Sea of Najaf, commonly known as the Dead Sea. Religious narratives without historical context state that the cemetery dates back to pre-Islamic periods. This cemetery is 700 hectares in size and contains millions of bodies. The city of Najaf is one of the largest in Iraq, with a population of one million people. Still, it is the city of the dead, which contains millions of remains and corpses, because it stretches for more than ten kilometers along the valley. The cemetery has two types of burials: tombs that exceed 80 cm in height and catacombs that are 5 to 8 meters underground. The cemetery has been in operation for over 1,400 years and is a UNESCO World Heritage site [1].

Burials in Najaf have been documented since the Sassanid and Parthian eras, when tombs similar to them were discovered. It has been stated that 200-300 persons were buried there daily during the Iraq war, but by 2010, the number had reduced to less than 100 per day, with 500,000 burials held each year. In 2014, as part of the fight against ISIS, it was reported that the cemeteries had moved beyond the bounds of the Najaf Governorate [2]. Image analysis has proven to be the most accurate phenotypic description of environmental samples that are continuously exposed to pollution over time; thin sections were previously analyzed for the first time with image analyzers by [3].

According to an image analysis technique, a structure was assessed by quantification in all aspects, such as pore size, pore shape, distribution, irregularity, orientation, and continuity on thin sections [4]. This morphometric technique has the advantage of combining pore space measurement and characterization with visual appreciation of the type and distribution of pores at a specific point in their dynamic evolution, and it has improved methods for direct quantification of pores and determining the type and level of damage. Image analyzers use a lightweight electronic analysis to examine images taken by a light or electronic microscope. The SEM may be used to study the thin sections at various magnifications. For example, if the image analyzer analysis starts at x500 magnification and the pixel size is 0.2 μm , pores in the range of storage pores 0.5-50 μm can be detected from the back-scattered electron scanning images [5]. Pore patterns analysis allows for the characterization and prediction of flow processes by determining the form, width, and length of these pores. Several studies have revealed variations in pore size distribution at water content when soil is saturated with water after rain and

splits close as a result of saturation changes in pore size distribution, according to [6].

The extra metal in the soil is caused by anthropogenic sources such as human waste. Similarly, while human body decomposition is a natural process, it is linked to the emission of greenhouse gases into the atmosphere as well as the entry of metallic pollutants into cemetery soil [7]. Due to the natural decomposition of multiple bodies in a small region, metals have been demonstrated to contaminate communities within a 400-500 m radius of such spots, according to [7,8,9]. Metals accumulate by remains during the natural process of decomposition and take the form of necroslurry, which contributes to physical contamination that can contaminate underground water supplies as well as soil, creating worries about cemetery contamination [10]. This highlights the need for increased types of necroslurry treatment, especially given the high mortality rates (e.g., 25,356 deaths as of October 22, 2022).

Each 70 kg cadaver emits roughly 30 L of necroslurry into the environment during the decomposition process [11,12,13]. The COVID-19 epidemic has dramatically increased mortality statistics [1], leading to the notion that there is a considerable increase in the content of metals in cemetery soil. The pandemic also raised overall mortality by 1.3% due to high rates of burial.

Because the COVID-19 outbreak caused high mortality rates and an increase in burials, it is critical that this study reveals metal contamination in the soil and vegetation surrounding the cemetery. The importance of this study is highlighted by the high rate of burials, as contaminants must be monitored in cemeteries in order to use the methodology described here for future global research.

Methods

Sample collection

Soil and *C. dupreziana* plant leaves were collected and spaced every 100 meters from cemeteries A, B, and C. Soils were tested at two depths, two depths, from 10 cm to 30 cm, and three levels of repetition between the sites, for a total of 18 samples according to protocol [14,15] in December 2021. Following each collection, the sampled material was sent to the Ministry of Commerce's Laboratory of Environmental and Instrumental Quality Control, where the procedures were as follows: analytical in triplicate with mean deviation and analytical curve with traceability percentage of pollution risk limit.

Scanning electron microscope (SEM) and EDX (energy dispersive X-Ray spectroscopy) to examine the characteristics of the leaves of *Cupressus dupreziana* plants and soil near and far plants and analyze elements (Pb, Fe)

The scanning electron microscope (SEM) was the first to create images of sample surfaces based on morphology and composition using scattered electrons. It also offers a three-dimensional image system that enables measurement of individual particles to provide overall image analysis with results that are distinct and fall between (2000-5000). KX magnification with the dominant fabric was chosen region in relation to the scanned surface's inspecting dimension for more precise details according to [16].

The EDX element images are then placed in a metal experimental tray, which is either white for dark specimens or black for light specimens, and then incident reflected light is used to examine the specimens. The tray may also contain a comparison grid, which is frequently treated with a sticky substance to keep the particles in place while being examined under a microscope, effectively allowing for the examination of specimens using transmitted polarization [16]. Lead and iron concentrations were measured in plants and soil of the study areas. Leaf plant samples were collected with three replicates of each sample, then dried outdoors at room temperature for 3-5 days, ground with a mill, and sifted with a 1 mm diameter sieve to be ready for analysis. Soil Samples: One soil sample was collected from contamination sites with three replicates of the sample by using cleaned polyethylene bags from a depth of 30 cm and measuring the concentration according to [17].

Results

Leaf plants and soil samples were taken in the inner area of cemeteries using the average depth pattern, and the results were obtained. The study of iron and lead revealed an increase in concentration; it has been established that exposure to too much iron in the environment might result in iron toxicity. Acidic soil and the presence of oxygen significantly influence soil fertility levels [14,18].

The levels of these metals found in the graveyard soil and the uppermost layers are quite concerning. The concentrations of iron and lead in the plant's leaves and the soil near and far from cemeteries are shown in Figures 1a and 1b. A quadratic movement in the

behavior curve indicated a higher level of analysis sophistication. Although it indicated high metal concentrations, indicating contamination over the WHO and CETESB-recommended limits, it may also disclose another significant factor that influenced its behavior in the investigated soil layers. Since wells provide the area's private and public water supplies, it is therefore possible to increase awareness of the extent of lead pollution in the interior region of the tombs, presuming that it can extend to the groundwater reservoirs beneath. Since there isn't yet a standard for an acceptable concentration, the high levels of Fe found inside tombs also serve as a warning, but according to [15,16], in the global COVID-19 fatal case forecast, this indicates that the environment surrounding these investigated graves may be problematic for this particular chemical element. The forecast ARIMA model is based on historical performance. This model is used as a forecasting tool to anticipate future behavior. It is employed in technical analysis to forecast the performance of an asset in the future and was only used in this investigation on COVID-19 fatal cases that have been reported internationally. Through this process, it was possible to understand the time series' behavior, especially if it had a unit root or was stationary. The series does not exhibit the steady behavior needed for modeling; the absence of stationary behavior in the series is most likely due to the aggressive spread of COVID-19. The temporal series's examined results were found to be non-stationary using the KPSS test statistic of 7.45 with a p-value of 0.01. Given that the series possessed a unit root, the feasts R package function was utilized to look into the minimum number of deviations needed to guarantee stationarity. Next, two adjustments were applied to the original series using unit root 2. In order to train the data with 95% of the entire data, regular data without any gaps, a weekly seasonality was found in the daily data, which was the result of another test using the feasts package to look for the presence of dead bodies at different sites [17].

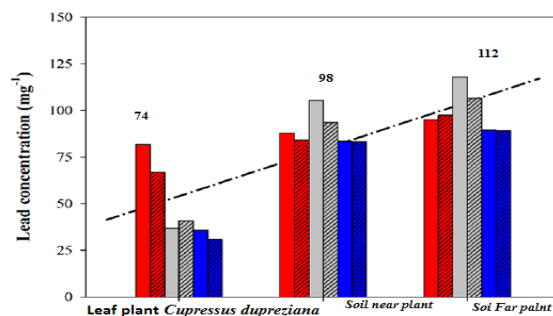


Figure 1a: Lead concentration in leaf *Cupressus dupreziana* plants and the soil surrounding them.

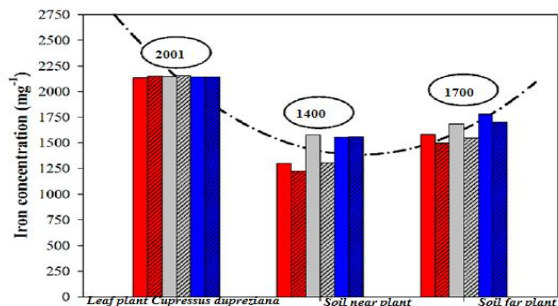


Figure 1b: Iron concentration in leaf *Cupressus dupreziana* plants and the soil surrounding them.

The method in the fable package fits the series using maximum likelihood estimation and the corrected information criterion, which is the best among the information criteria. An ARIMA analysis was conducted on three sites with parameters (1, 2, 3) for the AR part and (0, 1, 0,1,1) for the MA part. The model was selected as the best fit, with the following primary accuracy measures on the test set: 0.21490 and 0.32463; 0.24106 MPA across three sites. Soil measurements are often scale-free methods for point forecasting. Cumulative fatal cases caused by COVID-19 from January 22, 2020, to July 6, 2021, are reported according to [18,12]. Source: Unprocessed data obtained from the Center for Systems Science and Engineering (CSSE) at Johns Hopkins University's COVID-19 data repository. It was determined when and how much plant morphology was impacted by various elements, and different methods of magnifying and microscopically examining leaves were contrasted. With the high energy of a charged particle from the electrons within the sample in discrete energy levels, it enables us to ascertain the amount of pollutant accumulation caused by soil samples surrounding these plants in each study area as a preliminary investigation crucial for any damage, resulting in anticipated risks that adversely affect the environment according to [19,20]. As a result, *Cupressus dupreziana* leaf emission has been stimulated. The relationship between a material's behavior and its relationships to more data about its natural properties is tracked by its elemental composition. It served as the starting point for a microscope examination of samples from all study areas. We were given a clear picture of the data showing a significant correlation for any sample in total contents and relative abundances, as well as essential weather pollutants from the effect source sample in a natural area used as a control examination. An overall observation image analysis of the cemetery was performed using magnifications between 2000 and 5000 KX.

Figures (2 and 3) showed that the most accurate images of the thicker fibrous material were obtained

using a scanning electron microscope (2000 and 5000 x Mg), and they showed that the surface was covered by additional layers. The total number of fabrics was as follows: D Fabric 51.5 μm and A Fabric 31.4 μm in (2000 KX at 5 m) (5000 in 10m). With 5% fabric present in this plant, the percentage composition serves as a reliable pollution indicator and serves as a key sign of accumulations with high filament percentages that cause the outer layer [21].

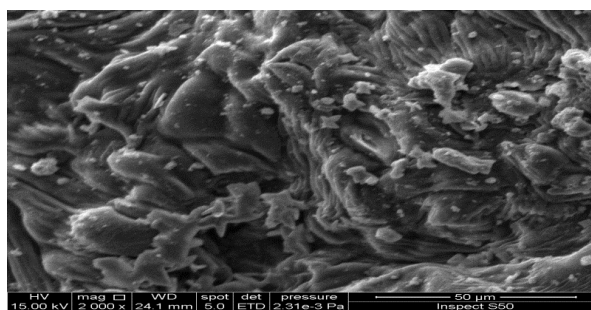


Figure 2: SEM Images of *Cupressus dupreziana* 2000KX Magnifications.

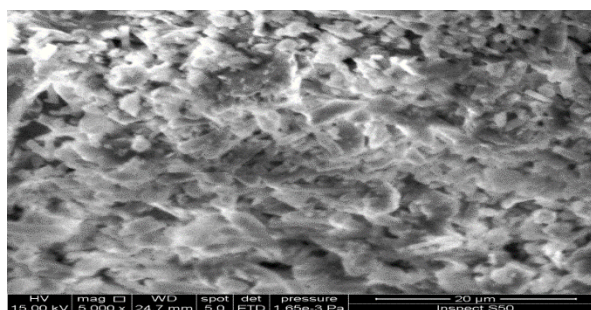


Figure 3: SEM Images of *Cupressus dupreziana* 5000KX Magnifications.

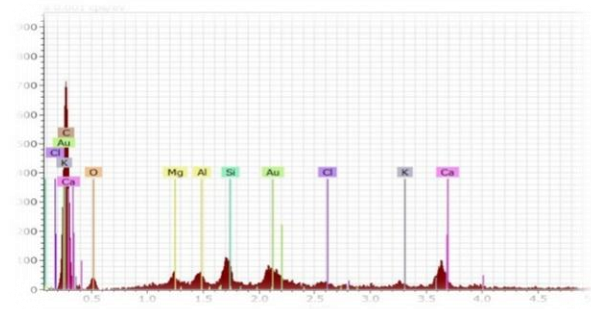


Figure 4: EDX elemental mapping images of *Cupressus dupreziana*.

Figure 4 depicts the EDX elemental mapping images of carbon, antimony, oxygen, zirconium, calcium, silicon, ruthenium, aluminum, magnesium, and potassium at the center of the metal oxide sintered compact. At the same time, the other wire embedded in resin was not observed because the incident electron has an apparent penetration depth, causing the sintered compact to emit characteristic X-rays [22].

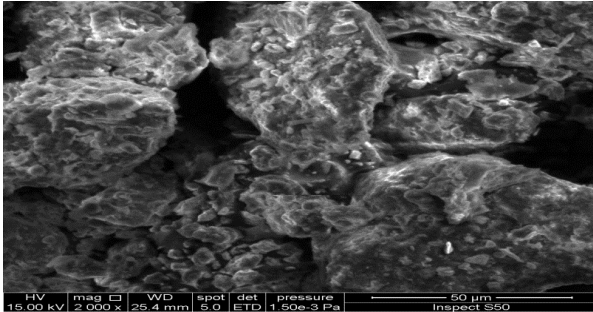


Figure 5: SEM image of Soil sample 2000KX magnification.

The highly dense clay matrices with large inter-assemblage pore spaces and few intra-assemblage pore spaces that dominate the fabric, indicating imbalance and damage, make up the microfabric of the soil samples, as shown in Figures 5 and 6. These matrices have perturbed parallelism and very small intra-assemblage pore spaces, as well as large inter-assemblage pore spaces of various shapes. In the absence and presence of 6.5% fabric at control (2000x mag), cling scanning electron microscope micrographs showed more fabric, which appeared to be covered by a thick extra layer surface based on the SEM viewing at higher 0.04 magnification.

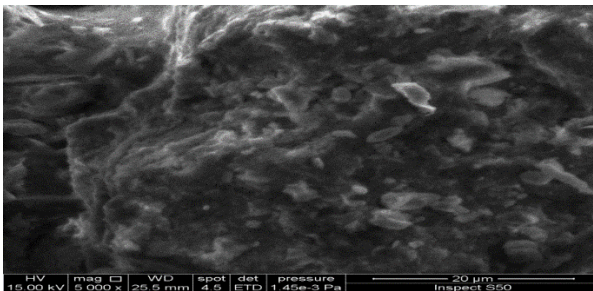


Figure 6: SEM image of Soil sample 5000KX magnification.

The layer thickness on the surface increased by 40%, and it appeared that the composition of the elements depended on concentration, where there were more layers on the surface according to [22]. The fabric numbers were expressed as the mean standard deviation from determination as follows: Fabric 39.1 m in (2000 KX at 5 m), and Fabric 66.5 m (5000 in 10 m). According to leaf plant storage concentrations of metals from soil can build up over time, as a result, with the absence and presence of 6.9% fabric at the cemetery, the percentage composition can be considered a reliable pollution indicator.

It became clear to us that in soils with high organic content that are subject to natural degradation, these fractions are such complex mixtures of related compounds that they exhibit a wide range of solubility and charge characteristics, particularly after degradation. Following the decomposition of the corpses, which occurred very close to the time of

sample collection, Antimony, Molybdenum, Calcium, Silicon, Niobium, Aluminium, Oxygen, Carbon, Magnesium, this agrees with [23,24].

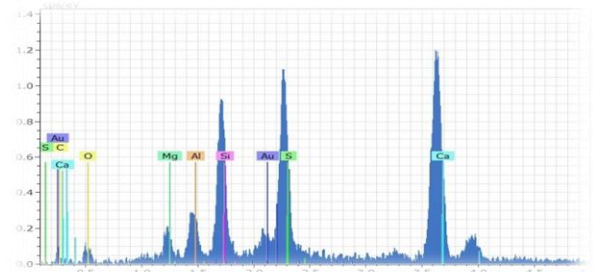
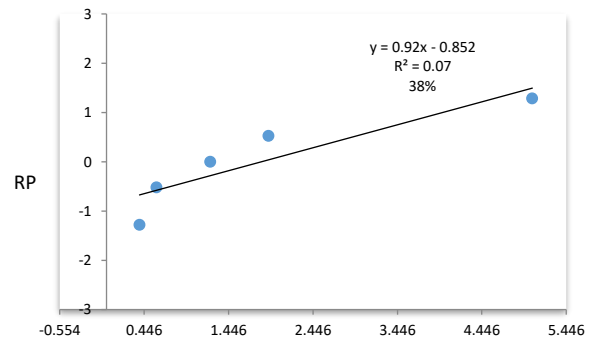


Figure 7: EDX elemental mapping images of Soil samples.

It became clear to us that in soils with high organic content that are subject to natural degradation, these fractions are such complex mixtures of related compounds that they exhibit a wide range of solubility and charge characteristics, particularly after degradation. Following the decomposition of the corpses, which occurred very close to the time of sample collection, Antimony, Molybdenum, Calcium, Silicon, Niobium, Aluminium, Oxygen, Carbon, Magnesium, this agrees with [23,24].



$R^2 = 0.07$, the percentage relative proximity values 38%. Figure 8: The percentage of bioavailability of the pollution risk limit.

The sensitivity and accuracy of factors and approximately converging parallel these soil samples have a linear regression slope of 0.07. Figures (7 and 8), only the values over the PR are then 38% of the data exist in close proximity to each other. The percentage of plant absorption is very low, indicating poor soil quality due to soil type and the highest bioavailability of pollution risk limit [25,26]. In this study, fatal COVID-19 cases were only reported by Iraqis. It was possible to understand the time series' behavior during this process, in particular, the number of deaths per day if the series is stationary. The SEM and EDX can be regarded as good indicators, and the morphometric method can produce comprehensive information about the soil and plant surrounding it through the presence

of elements. These analyses will help us to know it by counting and comparing it to the control. *Cupressus dupreziana* was characterized in detail, and groups of organisms were discovered in the soil of the study area. Random groups of organisms were found in the soil of the study area, the majority of which were mega fauna such as earthworms, which aerate the soil by breaking the solid bonds on its surface and transferring organic matter from the ground to the surface, which has a positive effect on maintaining the basic properties of the soil as well as developing the soil structure of the matrix of plants and other organisms. Vertebrates such as snakes, lizards, hares, mice, and scorpions also played essential roles in the decomposition process. They decompose complex proteins and polypeptides, and nucleic acids in corpses, producing ammonium ions, nitrates, and nitrites, which plants then use to build tissues, a natural process in the environment.

Discussion

In this study, fatal COVID-19 cases were only reported by Iraqis. It was possible to understand the time series' behavior during this process, in particular, the number of deaths per day if the series is stationary. The SEM and EDX can be regarded as good indicators, and the morphometric method can produce comprehensive information about the soil and plant surrounding it through the presence of elements. These analyses will help us to know it by counting and comparing it to the control. *Cupressus dupreziana* was characterized in detail, and groups of organisms were discovered in the soil of the study area. Random groups of organisms were found in the soil of the study area, the majority of which were mega fauna such as earthworms, which aerate the soil by breaking the solid bonds on its surface and transferring organic matter from the ground to the surface, which has a positive effect on maintaining the basic properties of the soil as well as developing the soil structure of the matrix of plants and other organisms. Vertebrates such as snakes, lizards, hares, mice, and scorpions also played essential roles in the decomposition process, decomposing complex proteins and polypeptides, and nucleic acids in corpses, producing ammonium ions, nitrates, and nitrites, which plants then use to build tissues, a natural process in the environment.

The SEM and EDX serve as reliable indicators, while the morphometric approach offers a holistic understanding of the soil and its associated plant life by analyzing elemental compositions. Employing these methods allows for quantitative

assessment and comparison against the control, aiding in the thorough characterization of *Cupressus dupreziana*. Furthermore, these analyses shed light on the various organism clusters found within the study area's soil.

Acknowledgment

The authors would like to thank Mustansiriyah University (www.uomustansiriyah.edu.iq) Baghdad – Iraq for its support in the present work and are incredibly grateful to the National University of Science and Technology / College of Health and Medical Technology and Biology Department, Faculty of Science, University of Tabuk, Umluj, Saudi Arabia for their cooperation and all the people help us to get our data.

Conflict of Interests

The authors declare no conflict of interest.

Author Contributions

Study conception and study design: Estabraq Mohammed Ati (EA) Awatif M. Abdulmajeed (AA); data collection: Basmah M. Alharbi (BA), Reyam Naji Ajmi (RA), Abdalkader Saeed Latif (AL); contributed data or analysis tools: EA, AAi; performed the analysis and interpretation of results: BA, RA, and AL; draft manuscript preparation: AL, RA, BA; Revised it critically for important intellectual content: EA and AA; Supervised the whole study and experimental work and approved for further proceeding: EA, AA, and RA; All authors reviewed the results and approved the final version of the manuscript.

References

1. World Health Organization, Ammonia in drinking water-background document for development of WHO guideline for drinking water quality, 4th Ed., WHO Series, Geneva, 2012.
2. APHA, Standard methods for the examination of water and wastewater, 18th Ed., American Public Health Association, APHA Press, Washington D.C., (1998).
3. Ajmi, R.N., Lami, A., Ati, E.M., Ali, N.S., Latif, A.S. Detection of stable isotopes in soil and water marshes of Southern Iraq. *Journal of Global Pharma Technology*, (2018), 10(6), pp. 160–171 .
4. World Health Organization, 'Statement on the Meeting of the International Health Regulations (2005) Emergency Committee Regarding the Outbreak of Novel Coronavirus 2019 (n-CoV) on 23 January 2020' (n 169).
5. Fadhel R, Zeki HF, Ati EM, Ajmi RN. Estimation Free Cyanide on the Sites Exposed of Organisms Mortality in Sura River /November 2018. *Journal of Global Pharma Technology. Technology*, (2019); 11(3) (Suppl.): 100-105
6. Chen Y, Tong Z, Zheng Y, Samuelson H, Norford L. Transfer learning with deep neural networks for model predictive control of HVAC and natural ventilation in smart buildings. *Journal of Cleaner Production*, (2020); 254: 119866.

7. Chintalapudi N, Battineni G, Amenta F. COVID-19 virus outbreak forecasting of registered and recovered cases after sixty day lockdown in Italy: a data driven model approach. *Journal of Microbiology, Immunology and Infection*, (2020); 53: 1–8.
8. Alishaq M, Jeremijenko A, Nafady-hego H, Ajmi JAA., Elgendy M, Fadel RAA, Thomas AG, Alahmed MAA, Ammar A, Bensaad M. SARS-CoV-2 infection in mortuary and cemetery workers. *International Journal of Infectious Diseases*, (2021); 105: 621–625.
9. Khan S, Ur-Rehman T, Mirza B, Ul-Haq I, Zia M. Antioxidant, antimicrobial, cytotoxic and protein kinase inhibition activities of fifteen traditional medicinal plants from Pakistan. *Pharmaceutical Chemistry Journal*, (2017); 51391-398.
10. Kortei NK, Heymann ME, Essuman EK, Kpodo FM, Akonor PT, Lokpo SY, Boadi NO, Ayim-Akonor M, Tettey C. Health risk assessment and levels of toxic metals in fishes (*Oreochromis niloticus* and *Clarias anguillaris*) from Ankobrah and Pra basins: Impact of illegal mining activities on food safety. *Toxicology Reports*, (2020); 7: 360–369.
11. Kwiatkowski D, Philips PCB, Schimdt P, Shin Y. Testing the null hypothesis of stationarity against the alternative of a unit root: How sure are we that economic time series have a unit root? *Journal of Econometrics*, (1992); 54(1–3): 159–178.
12. Amiel N, Dror I, Zurieli A, Livshitz Y, Reshef G, Berkowitz B. Selected technology-critical elements as indicators of anthropogenic groundwater contamination. *Environmental Pollution*, (2021): 284: 117156.
13. Fattah H, Caso F. A brief history of Iraq-12-Infobase Publishing. (2008), ISBN 08160-57672, pp 69. https://books.google.iq/books?id=Q_-hrXU-mWYC&printsec=frontcover#v=onepage&q&f=false.
14. Zeki, H.F., Ajmi, R.N., Mohammed Ati, E., Phytoremediation mechanisms of mercury (Hg) between some plants and soils in Baghdad city. *Plant Archives*, (2019), 19(1), pp. 1395–1401. [https://www.plantarchives.org/PDF%2019-1/1395-1401%20\(5050\).pdf](https://www.plantarchives.org/PDF%2019-1/1395-1401%20(5050).pdf)
15. Finegan O, Fonseca S, Guyomarc'h P, Morcillo Mendez MD, Rodriguez Gonzalez J, et al. ICRC Advisory Group on the Management of COVID-19 Related Fatalities International committee of the red cross (ICRC): general guidance for the management of the dead related to COVID-19. *Forensic Science International: Synergy*, (2020); 2:129–137.
16. Morillas H, Marcaida I, Maguregui M, Upasen S, Gallego-Cartagena E, Madariaga JM. Identification of metals and metalloids as hazardous elements in PM2.5 and PM10 collected in a coastal environment affected by diffuse contamination. *Journal of Cleaner Production*, (2019); 226: 369–378.
17. Parhizkar H, Khoraskani RA, Tahbaz M. Double skin façade with Azolla; ventilation, indoor air quality and thermal performance assessment. *Journal of Cleaner Production*, (2020); 249: 1–10.
18. Quinton JM, Östberg J, Duinker PN. The influence of cemetery governance on tree management in urban cemeteries: A case study of Halifax, Canada and Malmö, Sweden. *Landscape and Urban Planning*, (2020); 194: 103699.
19. Rae RA. Cemeteries as public urban green space: management, funding and form. *Urban Forestry and Urban Greening*, (2021); 61: 127078.
20. Ati EM, Abbas RF, Jazar ZH, Ajmi RN. The probability of calculating the pollution limit in mineral-contaminated soils and the physiological effect of the surrounding plants (2023). *Academicia Globe: Inderscience Research (ISSN: 2776-1010)* 4 (3).
21. Neckel A, Gonçalves AC, Ribeiro LA, Oliveira CC, Silva A, Cardoso GT. Cemeteries heavy metals concentration analysis of soils and the contamination risk for the surrounding resident population. *Journal of Engineering Research and Application*, (2016); 6(6): 30–35.
22. Rahmatullah SHA, Ajmi RN. Anti-pollution caused by genetic variation of plants associated with soil contaminated of petroleum hydrocarbons. *European Chemical Bulletin*, (2022), 11(7): 33-44.
23. Neckel A, Costa C, Mario DN, Sabadin CES, Bodah ET. Environmental damage and public health threat caused by cemeteries: A proposal of ideal cemeteries for the growing urban sprawl. *Urbe. Revista Brasileira De Gestão Urbana*, (2017); 9(2): 216–230.
24. Ajmi, R.N., Sultan, M., Hanno, S.H. Bioabsorbent of chromium, cadmium and lead from industrial waste water by waste plant. *Journal of Pharmaceutical Sciences and Research*, 2018, 10(3), pp. 672–674
25. Oliveira MS, Neckel A, Pinto D, Maculan LS, Dotto GL, Silva LFO. The impact of air pollutants on the degradation of two historic buildings in Bordeaux. *France. Urban Climate*, (2021a); 39: 100927.
26. Rajan R, Robin DT, Vandananani M. Biomedical waste management in Ayurveda hospitals— Current practices and future perspectives. *Journal of Ayurveda and Integrative Medicine*, (2019); 10(3): 214–221.



This work is licensed under a Creative Commons Attribution-NonCommercial 4.0 International License. To read the copy of this license please visit: <https://creativecommons.org/licenses/by-nc/4.0/>